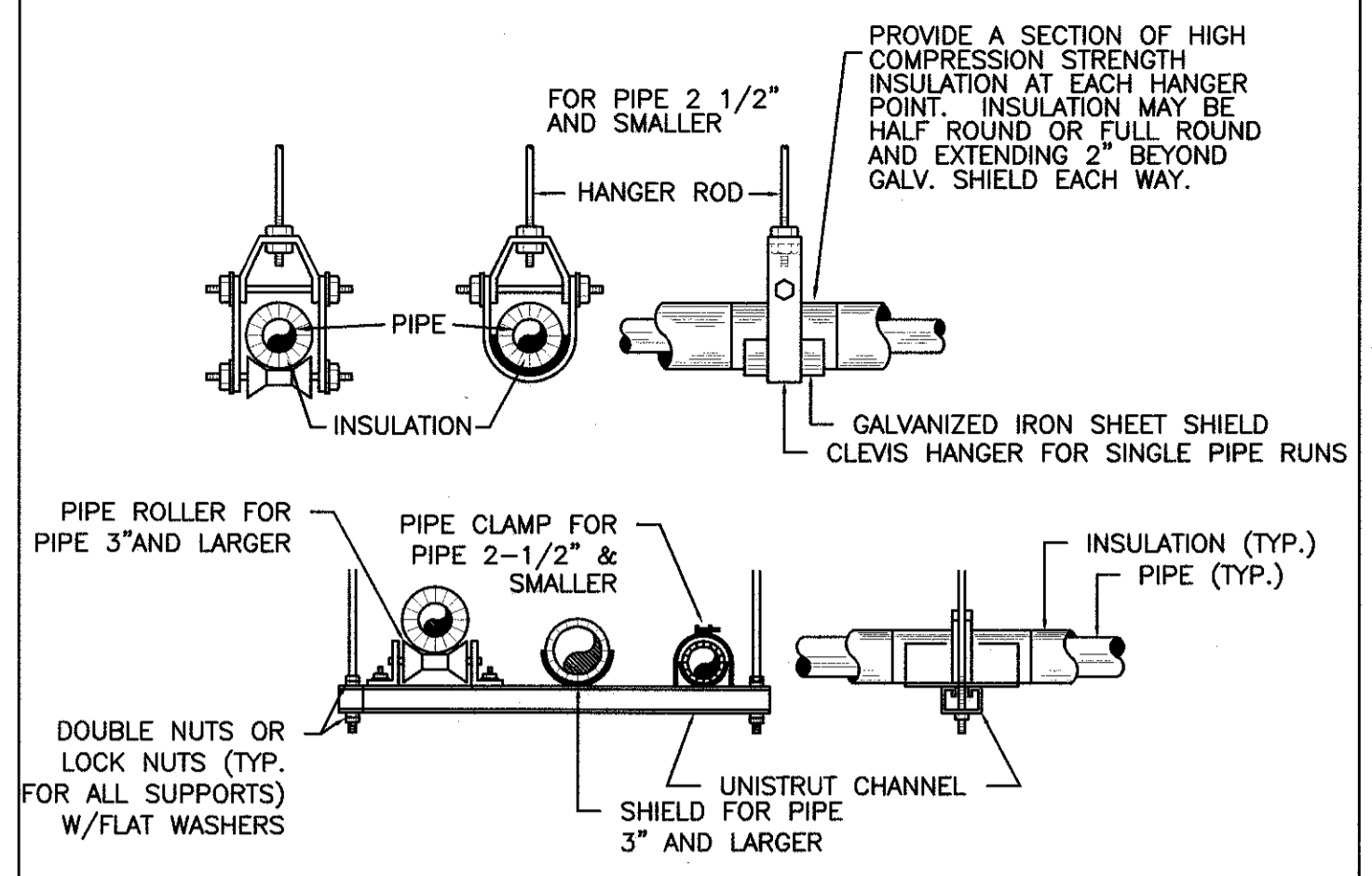


- DETAIL NOTES:**
1. MOUNT ON 4" HIGH 3/4" PLYWOOD BOX MOUNTED TO STORAGE PLATFORM LOCATED ABOVE MOPSINK.
 2. WALL
 3. FINISHED FLOOR
 4. 1-1/4" DRAIN TO MOP SINK W/ AIR GAP.
 5. FULL SIZE TO MOP SINK W/ AIR GAP.
 6. SEISMIC STRAP
 7. PRESSURE/ TEMPERATURE RELIEF VALVE
 8. ATMOSPHERIC VACUUM BREAKER THERMOMETER.
 9. EXPOSED PIPING ON WALL
 10. EXPANSION TANK ET-1.
 11. 12" HIGH HEAT TRAP.
 12. SEE FLOOR PLANS FOR CONTINUATION.
 13. BALL VALVE (TYP.)
 14. WATER HEATER WHT-1
 15. DIELECTRIC UNION

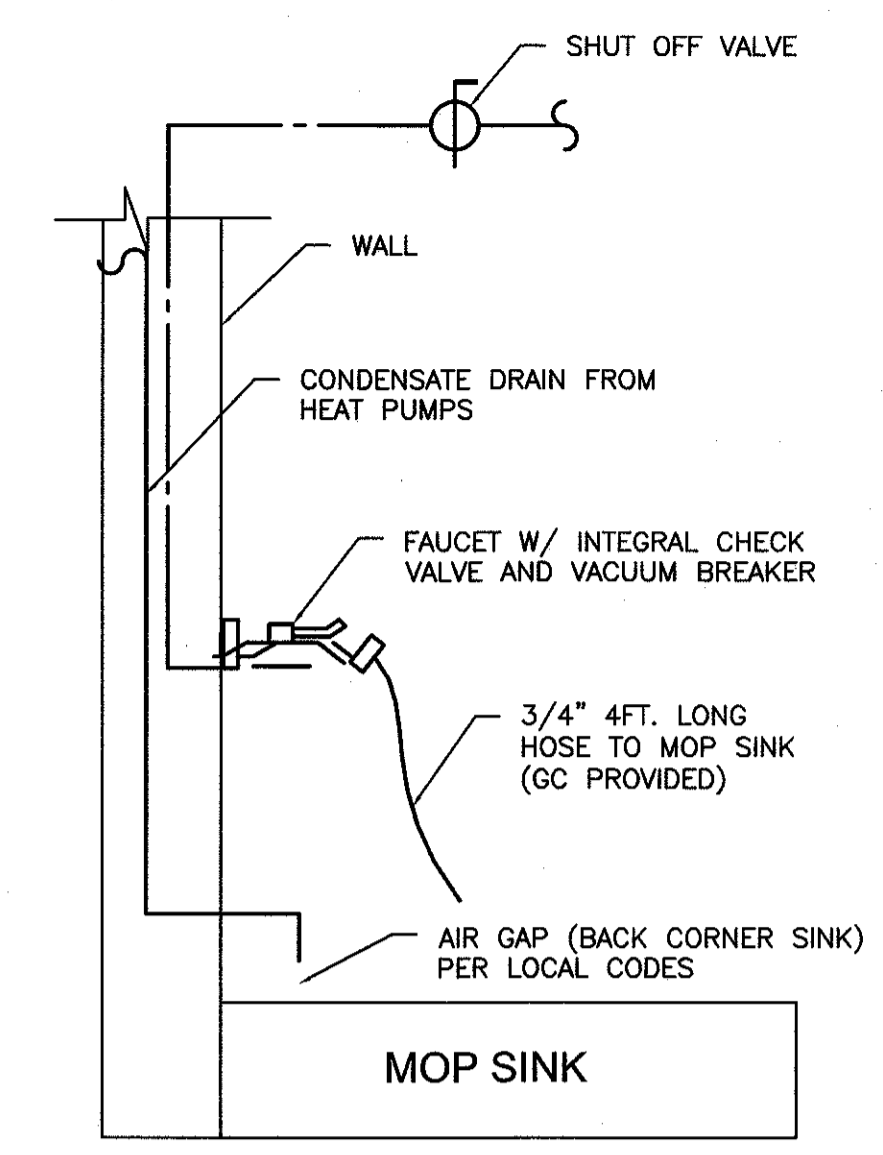
TANK WATER HEATER, WHT-1

NOT TO SCALE	3
--------------	---



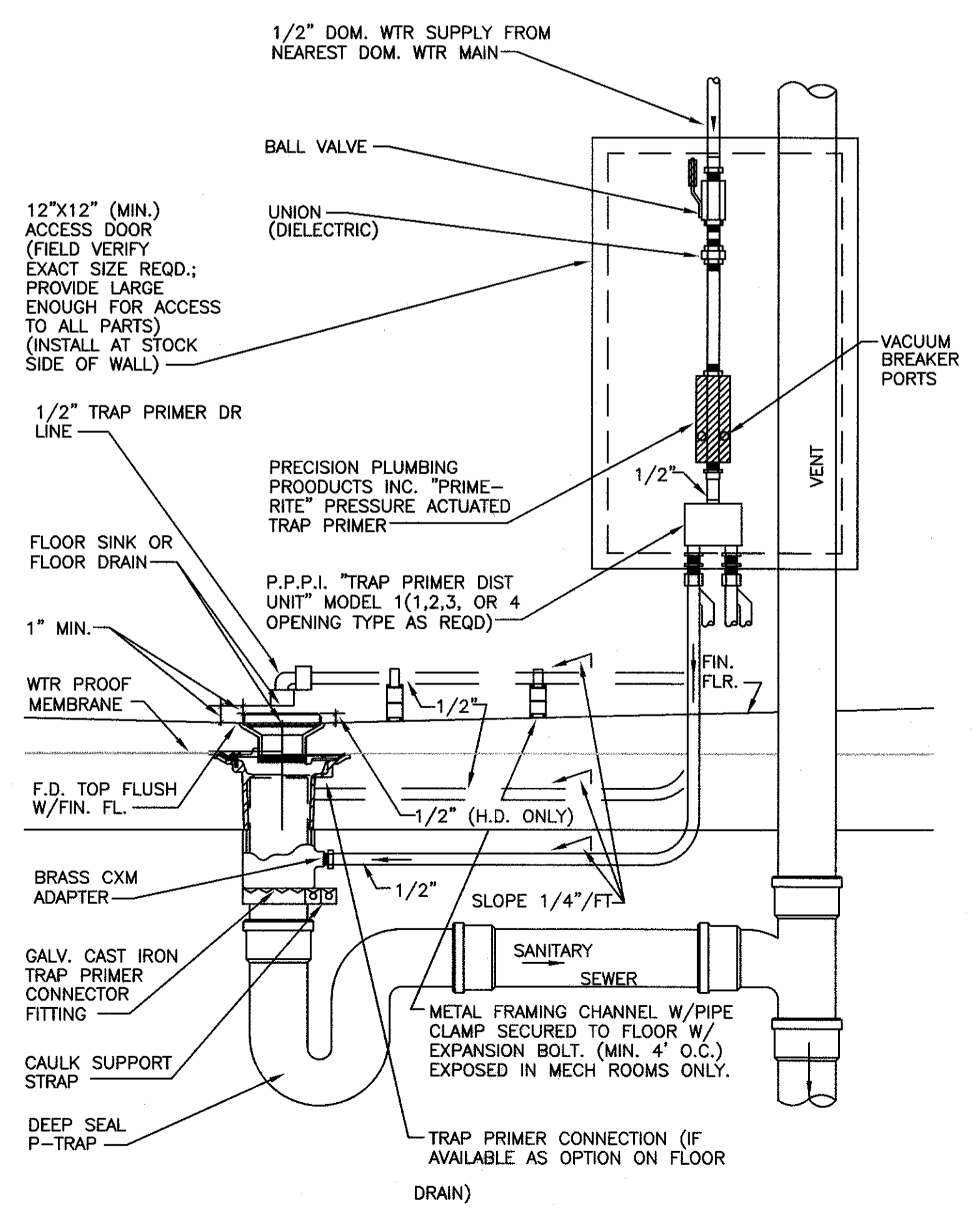
PIPE HANGER DETAIL

NOT TO SCALE	2
--------------	---



MOP SINK DETAIL

NOT TO SCALE	1
--------------	---



TRAP PRIMER CONNECTION DETAIL (TYP.)

NOT TO SCALE	4
--------------	---

OWNER: **WILLIAMS-SONOMA, INC.**
 3250 Van Ness Avenue
 San Francisco, CA 94109
 T 415 616 8802
 F 415 439 8164
 www.williams-sonoma.com

EEA
 EEA Consulting Engineers
 6515 Vaughn Ranch Road, Suite 200
 Austin, Texas 78739-2514 USA
 512.744.4400 main 512.744.4444 fax
 www.eeace.com

State of Registration: MAINE
 Firm Registration No. N/A
 EEA Project No. 20160538
 DRAWN BY: ARC
 CHECKED BY: BKK

Professional Engineer Seal for Michael N. Hart, No. 10507, State of Maine.

west elm
 Downtown Portland
 164 Middle Street
 Portland, ME 04101
 PROJECT #006-160335.00

ISSUED / REVISED	DATE
PRELIMINARY SET	09/08/16
LL COORDINATION SET	11/08/16
LL/PERMIT SET	11/21/16

PLUMBING
 DETAILS

P-201